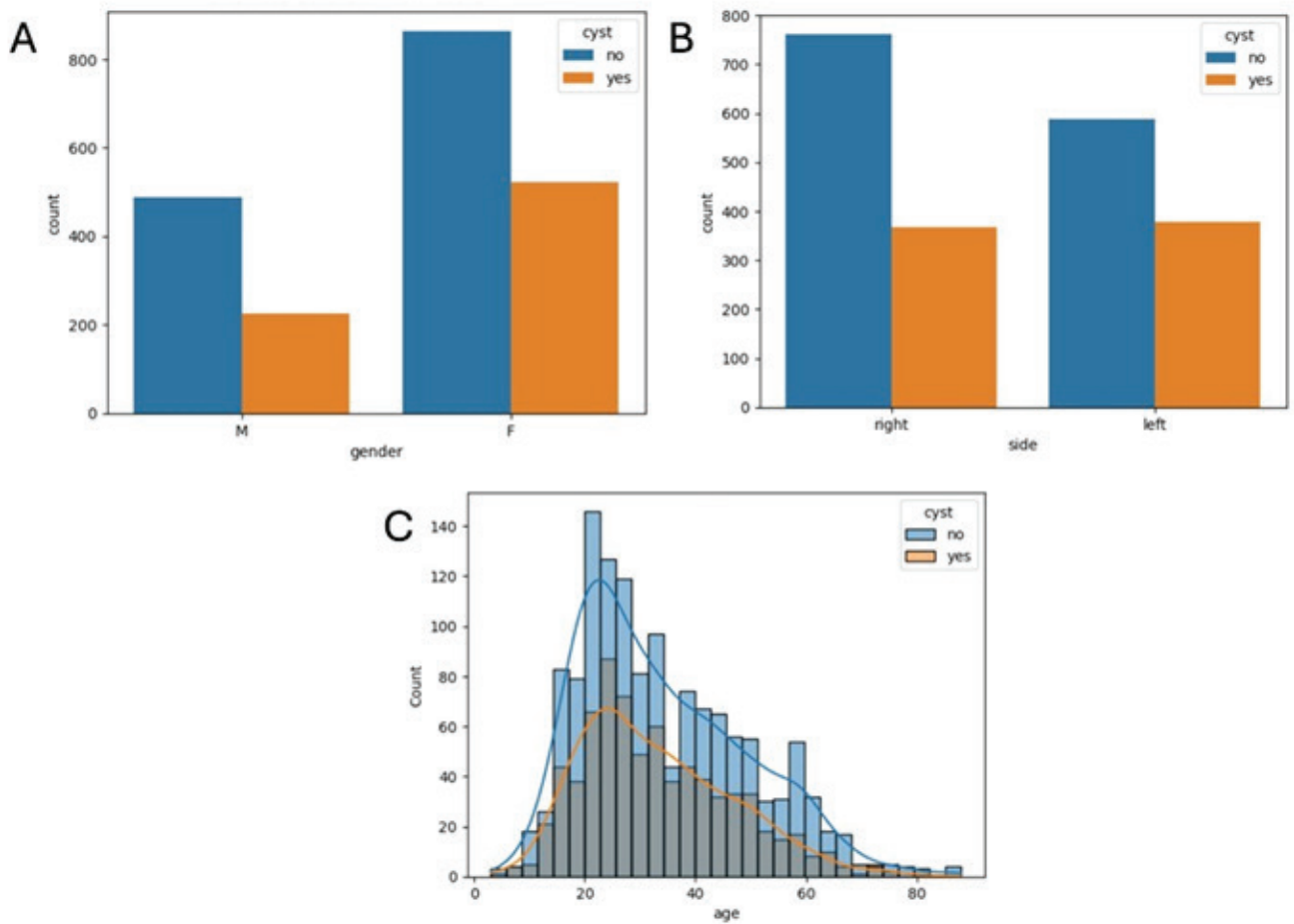


**Supplementary Figure 1.** Flowchart of patient selection (Abbreviations: n = number of patients; MRI = magnetic resonance imaging)



**Supplementary Figure 2.** Relationship between ganglion cyst presence and demographic variables, (A) Bar chart showing the prevalence of ganglion cysts by gender, (B) Bar chart illustrating the prevalence of ganglion cysts by wrist side (left vs. right), (C) Age distribution by ganglion cyst presence, shown as a histogram